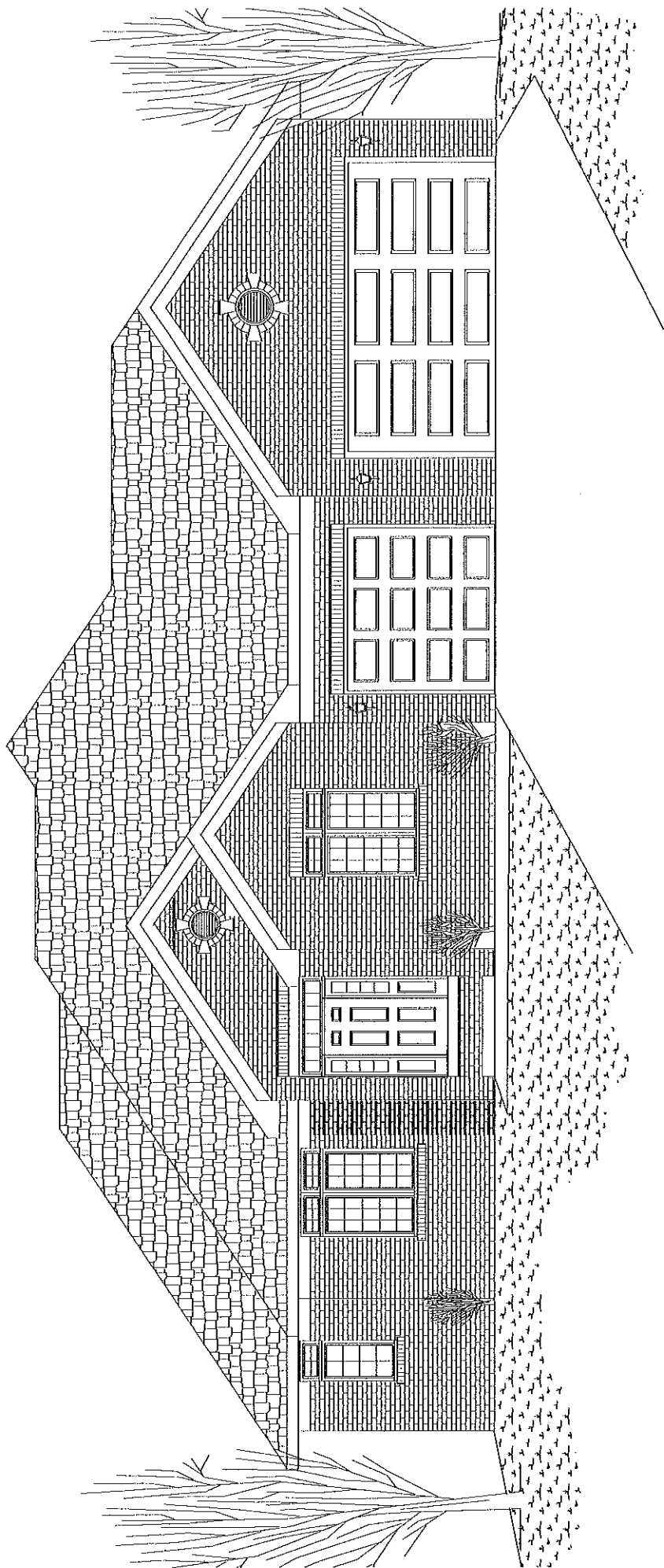
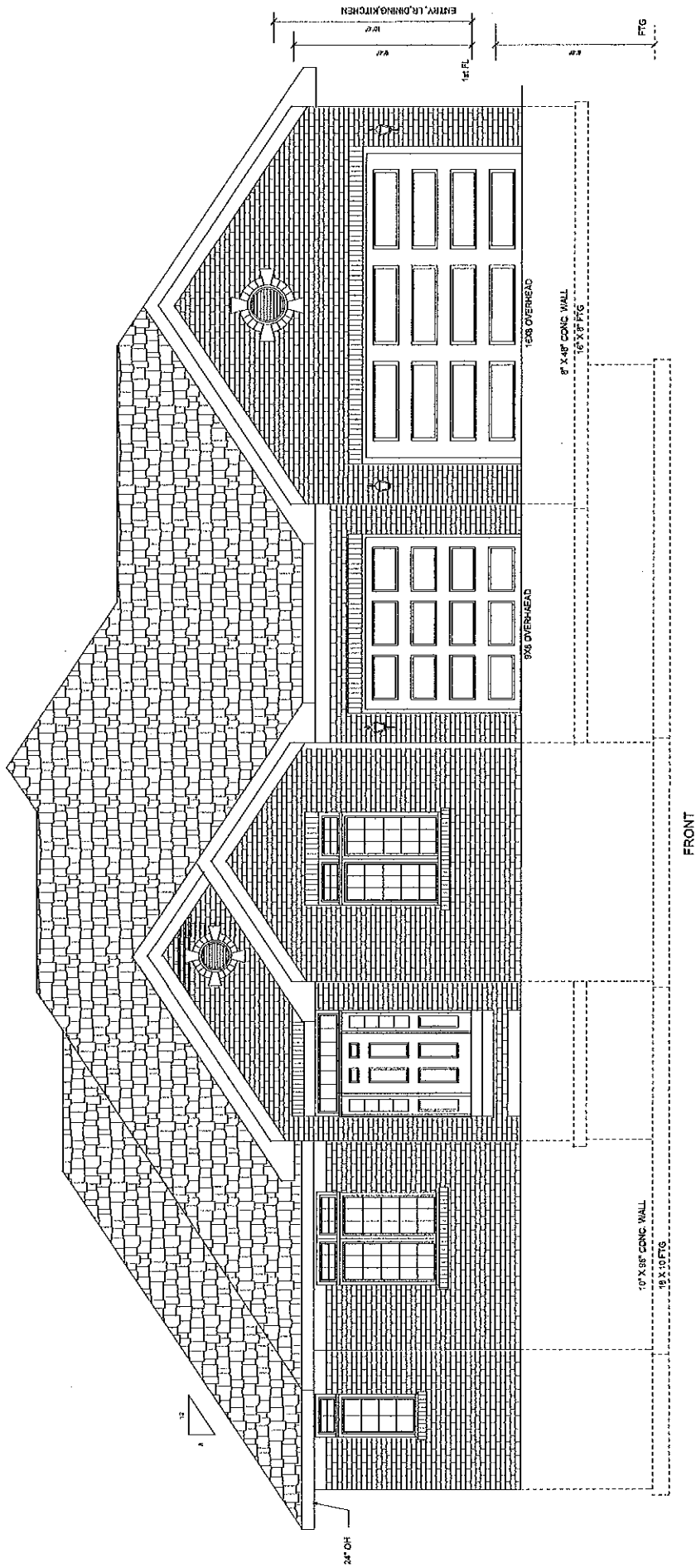
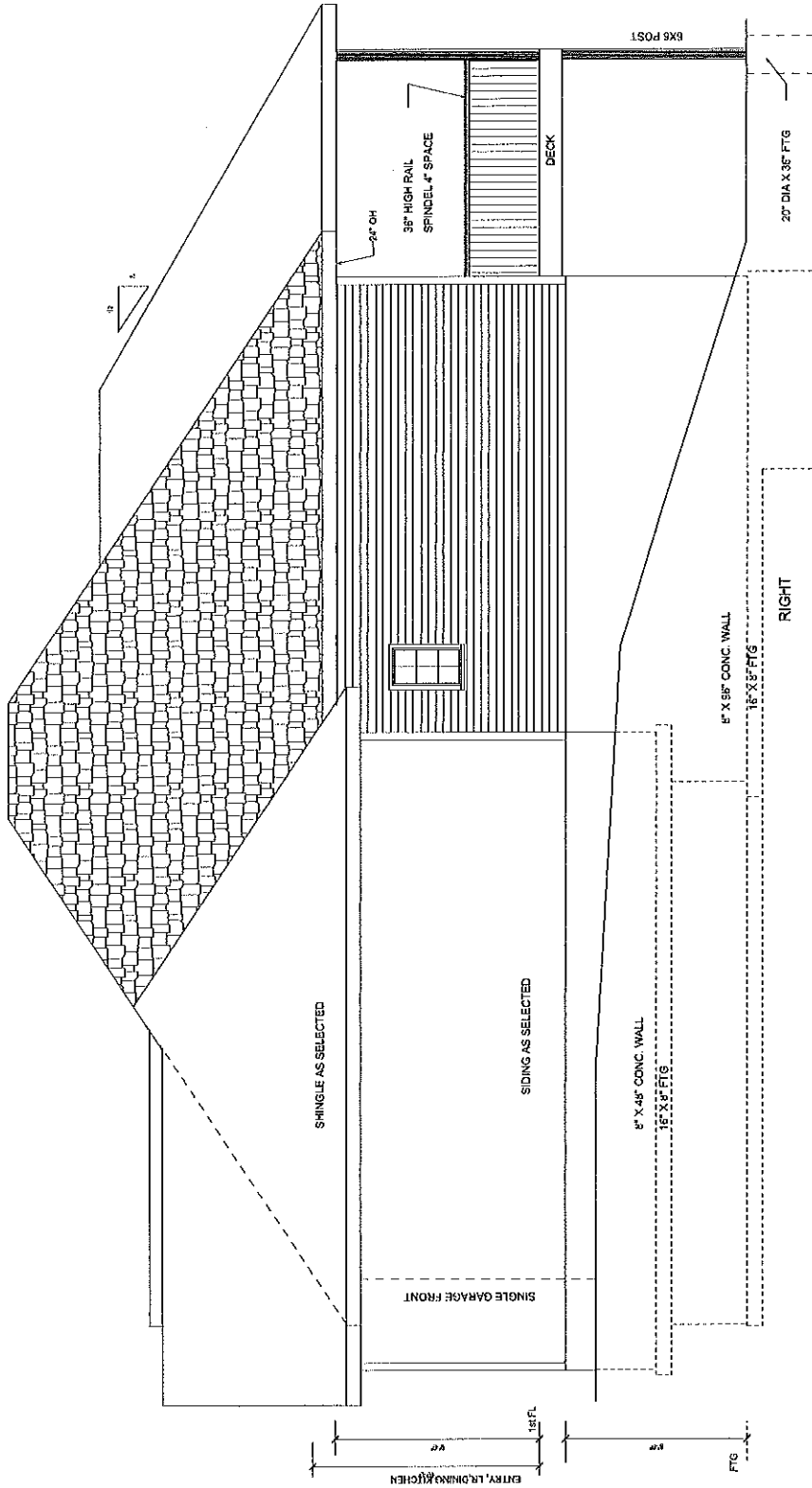
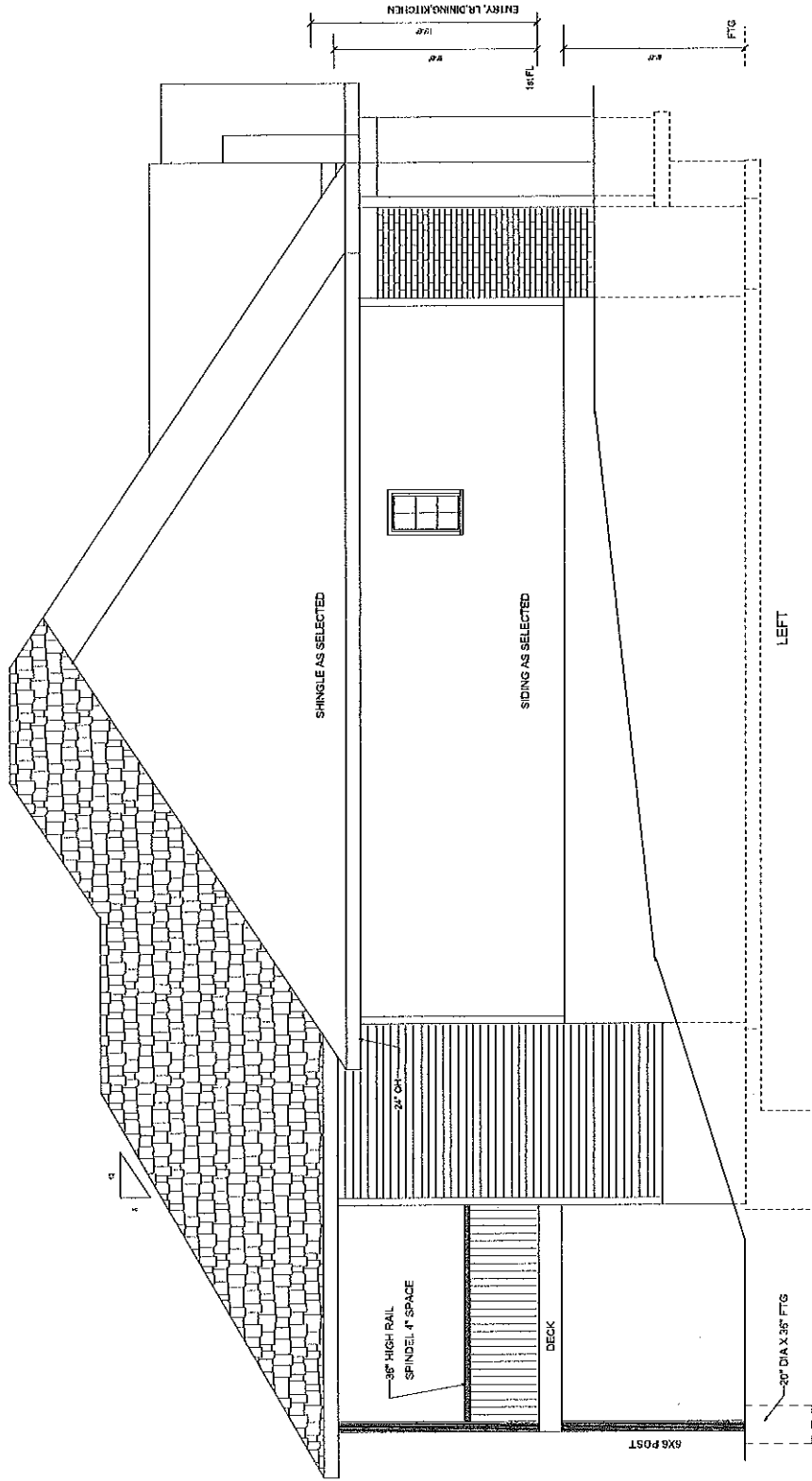


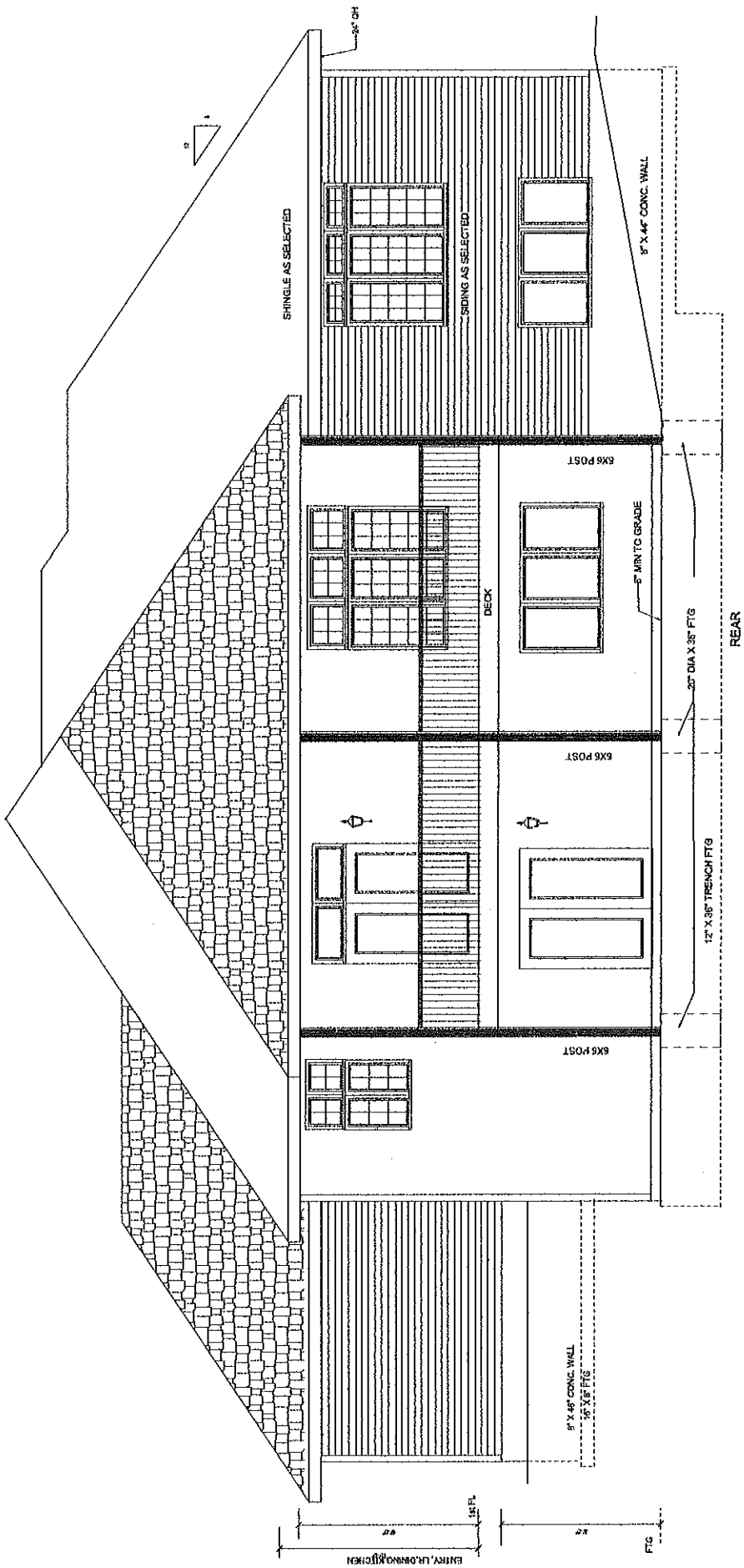
7727 SOUTH 28th STREET
 LOT 12: BLK 4: STONE RIDGE ESTATES 3rd ADDITION
 LINCOLN, LANCASTER COUNTY, NEBRASKA











ENTRY L.R. ORN. 8'0"

8'0"

8'0"

FTG

SHINGLE AS SELECTED

SHING AS SELECTED

8" X 4" CONC. WALL

6X6 POST

DECK

5" MIN TO GRADE

24" DIA X 36" FTG

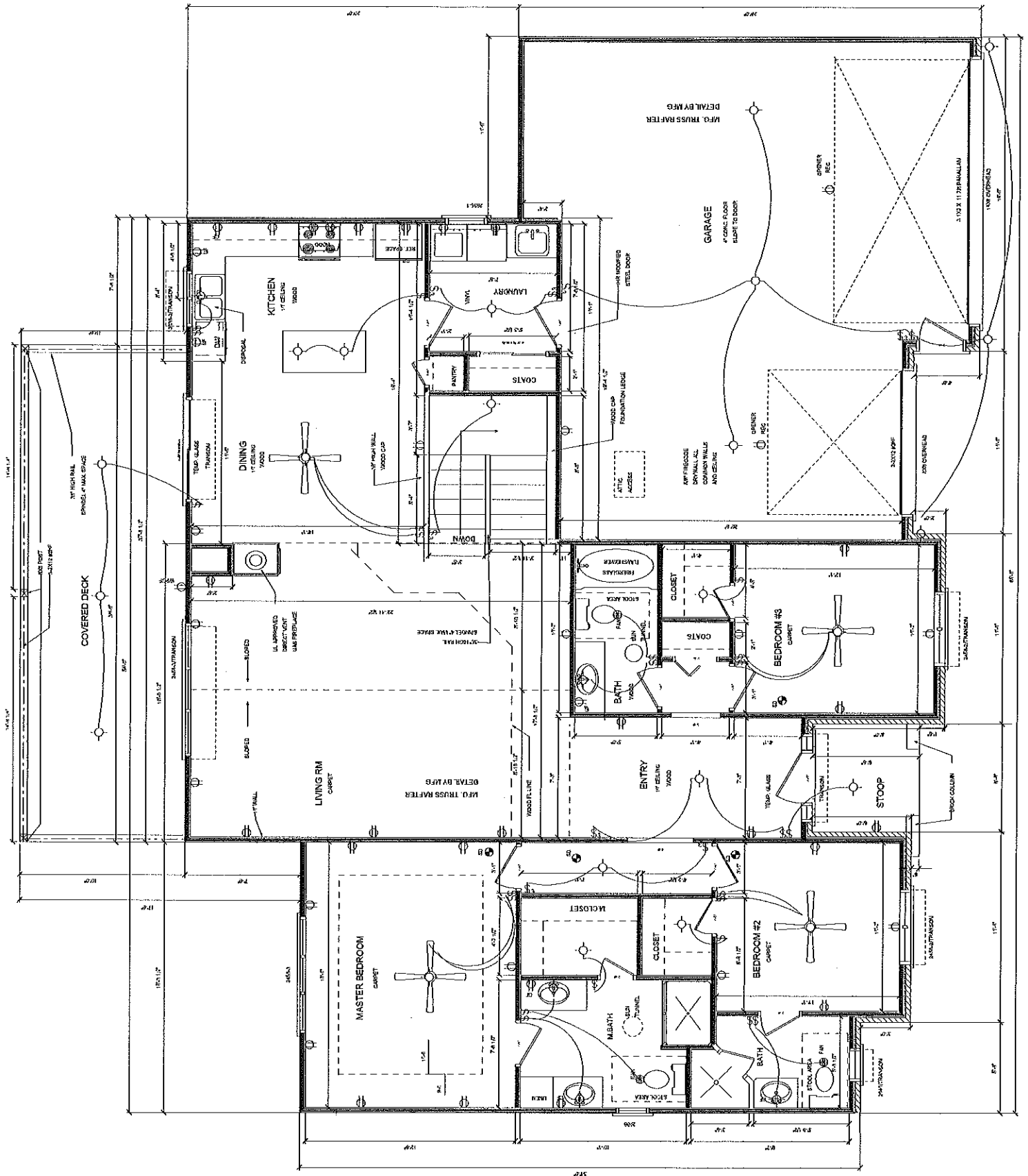
REAR

6X6 POST

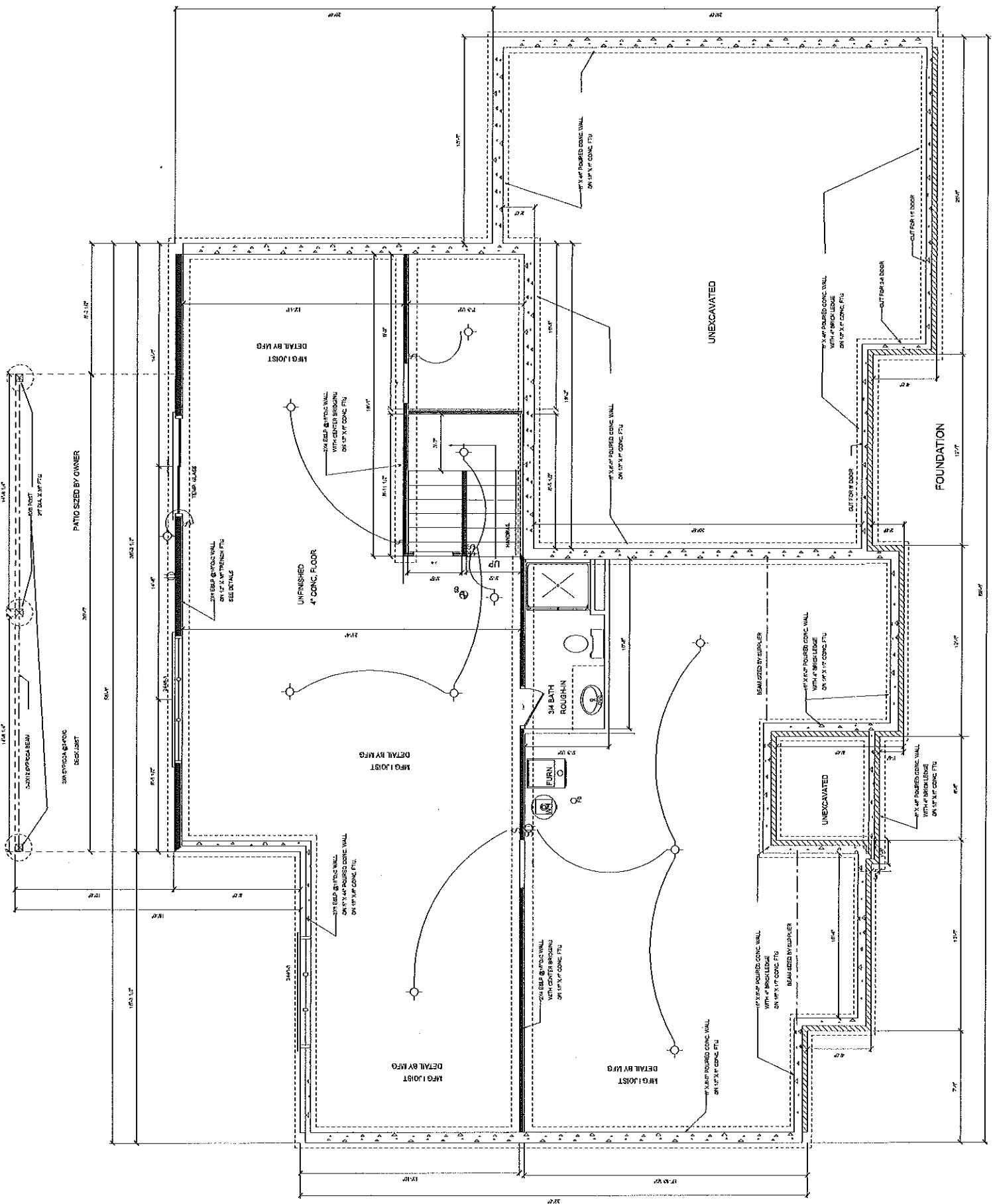
12" X 36" TRENCH FTG

6X6 POST

8" X 4" CONC. WALL
12" X 36" FTG



FIRST FLOOR 1810 SQ. FT.
SCALE 1/4" = 1'-0"



PATIO SIZED BY OWNER

UNFINISHED
4' CONC. FLOOR

UNEXCAVATED

FOUNDATION

3/4 BATH
ROUGH-IN

UNEXCAVATED

UNEXCAVATED

1/4\"/>

3\"/>

1\"/>

1\"/>

1\"/>

1\"/>

1\"/>

1\"/>

1\"/>

1\"/>

1\"/>

1\"/>

1\"/>

1\"/>

1\"/>

1\"/>

1\"/>

1\"/>

1\"/>

1\"/>

1\"/>

1\"/>

1\"/>

1\"/>

1\"/>

1\"/>

1\"/>

1\"/>

1\"/>

1\"/>

1\"/>

1\"/>

1\"/>

1\"/>

1\"/>

1\"/>